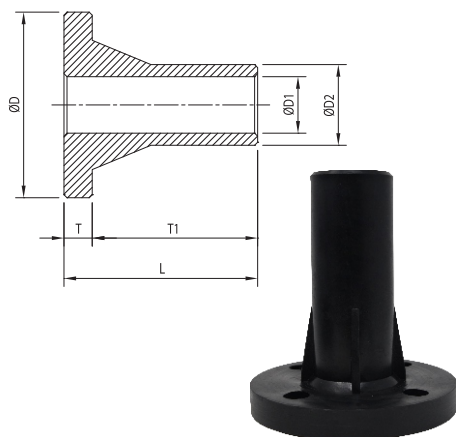


EXTRA LONG NECK PIPE END WITH FLANGE



An ISO 9001:2015 Company

Parth brand owned by
Parth Poly Fusion Pvt. Ltd.



- Fitting Technology: Butt-Fusion Fitting
- MOC – PP (Polypropylene) / PPCP – NATURAL (Polypropylene – Copolymer) / ISO-PP (Isotactic Polypropylene) / HDPE (High-Density Polyethylene) / PP-H (Polypropylene – Homopolymer) and PVDF (Polyvinylidene Fluoride)
- Max. Working Pressure and Temp.: 10kg / cm² / 150 PSI and 80° C
- AVAILABLE SIZE: 1" (32 MM) to 3" (90 MM)
- Flange PCD: Universal hole

Note: Fitting may have our old “PARTH” Logo

SIZE		CODE	ØD	ØD1	ØD2	L	T
IN.	MM						
1 "	32	P1ELF01	120.0	26.0	32.0	185.0	20.0
1 ½ "	50	P1ELF02	140.0	40.0	50.0	185.0	22.0
2 "	63	P1ELF04	165.0	50.0	63.0	185.0	22.0
3 "	90	P1ELF05	223.0	74.0	90.0	185.0	22.0

All Dimensions Are In mm

Max. Working Pressure 10kg/cm²

(±2 MM)

WORKING PRESSURE	
BODY	TEMP.
150 PSI	80° C



PARTH POLY FUSION PVT. LTD.

New Survey No. : 1065/1, Opp. Viva - 2 Ind. Estate,
Near Bhavda Gaam Canal, Bhavda, Ta: Daskroi,
Dist : Ahmedabad, GJ, IN. Pin Code : 382433

AEROCHEM PIPING PVT. LTD.

Plot No. 258, Road No. 1/B,
Phase - I, Kathwada GIDC,
Ahmedabad, GJ, IN. Pin Code : 382430

CONTACT :

+91-9375112220
sales@parthvalves.com
www.parthfusion.com

Note: Every effort has been made to ensure the information in this brochure is correct at the date of issue. Parth Poly Fusion Pvt. Ltd. operates a policy of continual product improvement and range extension, hence reserves the right to modify product specifications, without prior information, in line with market requirements.