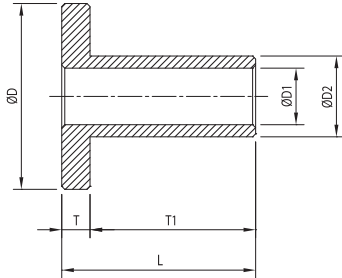


EXTRA LONG PIPE END TAIL PIECE



An ISO 9001:2015 Company

Parth brand owned by
Parth Poly Fusion Pvt. Ltd.



- Fitting Technology: Butt-Fusion Fitting
- MOC - PP (Polypropylene) / PCPP - NATURAL (Polypropylene - Copolymer) / ISO-PP (Isotactic Polypropylene) / HDPE (High-Density Polyethylene) / PP-H (Polypropylene - Homopolymer) and PVDF (Polyvinylidene Fluoride)
- Available Size: 20 MM TO 160 MM

Note: Fitting may have our old “PARTH” Logo or our subsidiary “AURA” Brand logo.

SIZE		CODE	ØD	ØD1	ØD2	L	T	T1
IN.	MM							
1 "	32	P1EL01	65.0	25.0	32.0	182.0	16.0	166.0
1 ¼ "	40	P1EL02	72.0	32.0	40.0	181.0	20.0	161.0
1 ½ "	50	P1EL03	80.0	38.0	50.0	181.0	20.0	161.0
2 "	63	P1EL04	96.0	50.0	63.0	181.0	20.0	161.0
2 ½ "	75	P1EL05	105.0	55.0	75.0	181.0	21.0	176.0
3 "	90	P1EL06	125.0	74.0	90.0	181.0	21.0	160.0
4 "	110	P1EL07	153.0	86.0	110.0	181.0	21.0	160.0
6 "	160	P1EL08	214.0	124.0	160.0	172.0	21.0	151.0

All Dimensions Are In mm

Max. Working Pressure 10kg/cm²

(±2 MM)

WORKING PRESSURE	
BODY	TEMP.
150 PSI	80° C



PARTH POLY FUSION PVT. LTD.

New Survey No. : 1065/1, Opp. Viva - 2 Ind. Estate,
Near Bhavda Gaam Canal, Bhavda, Ta: Daskroi,
Dist : Ahmedabad, GJ, IN. Pin Code : 382433

AEROCHEM PIPING PVT. LTD.

Plot No. 258, Road No. 1/B,
Phase - I, Kathwada GIDC,
Ahmedabad, GJ, IN. Pin Code : 382430

CONTACT :

+91-9375112220
sales@parthvalves.com
www.parthfusion.com

Note: Every effort has been made to ensure the information in this brochure is correct at the date of issue. Parth Poly Fusion Pvt. Ltd. operates a policy of continual product improvement and range extension, hence reserves the right to modify product specifications, without prior information, in line with market requirements.