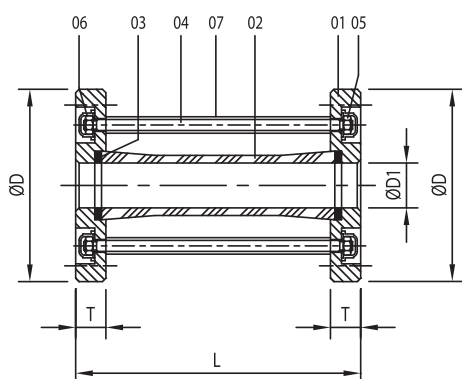
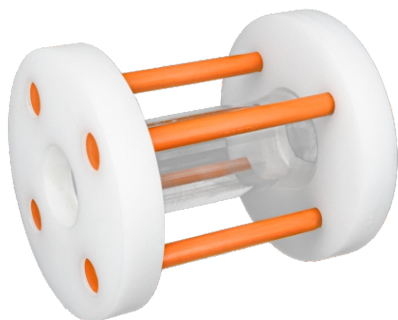


FLOW INDICATOR (FULL VIEW)



- MOC – PP (Polypropylene) / ISO-PP (Isotactic Polypropylene) / HDPE (High-Density Polyethylene) / PP-H (Polyethylene – Homopolymer) AND PVDF (Polyvinylidene Fluoride)
- Construction: 1-piece design full bore sight glass
- Design And Manufacturing Std.: As per the manufacturer's standard
- End Connections: Flanged as per ANSI B 16.5 (ASA 150) & as per BS 10 (Table D/E/F) & DIN STD
- Available Size: 1" (25 NB) to 6" (150 NB)

Note: We will also provide alterations in: • SS 316 Parts • ISO-PP + SS • ISO-PP + PVDF. Valves may have our old “PARTH” brand logo.

[illegible]

FLOW INDICATOR (FULL VIEW)

SIZE		CODE	ØD	ØD1	L	T
IN.	NB					
1 "	25	P1FI01	120.0	24.0	195.0	25.0
1 ½ "	40	P1FI02	140.0	38.0	195.0	25.0
2 "	50	P1FI03	165.0	50.0	195.0	25.0
3 "	80	P1FI04	200.0	75.0	195.0	25.0
4 "	100	P1FI05	226.0	100.0	195.0	28.0
6 "	150	P1FI06	305.0	150.0	195.0	30.0
			Available On Request			
			Available On Request			

ALL DIMENSIONS ARE IN MM

(±2 MM)

WORKING PRESSURE	
BODY	TEMP.
150 PSI	80° C