

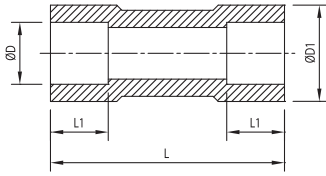
MOULDED SOCKET

THREADED TYPE



An ISO 9001:2015 Company

Parth brand owned by
Parth Poly Fusion Pvt. Ltd.



- Fitting Technology: Socket-Fusion Fitting
- MOC – PP (Polypropylene) / PPCP – NATURAL (Polypropylene – Copolymer) / ISO-PP (Isotactic Polypropylene) / HDPE (High-Density Polyethylene) / PP-H (Polypropylene – Homopolymer) and PVDF (Polyvinylidene Fluoride)
- As Per IS: 8008 – 1976 (PART I)
- Max. Working Pressure and Temp.: 10kg / cm² / 150 PSI and 80° C
- Available Size: ½" (20 MM), ¾" (25 MM), 1" (32 MM)

Note: Fitting may have our old "PARTH" Logo

SIZE		CODE	ØD	ØD1	L	L1
IN.	MM					
½ "	20	P1SP01	21.0	26.0	55.0	17.0
¾ "	25	P1SP02	25.0	31.0	60.0	20.0
1 "	32	P1SP03	32.0	40.0	75.0	23.0
1 ¼ "	40	P1SP04	40.0	48.0	75.0	23.0
1 ½ "	50	P1SP05	50.0	60.0	78.0	25.0
2 "	63	P1SP06	63.0	75.0	80.0	27.0
2 ½ "	75	P1SP07	76.0	90.0	84.0	28.0
3 "	90	P1SP08	91.0	105.0	90.0	31.0
4 "	110	P1SP09	111.0	128.0	104.0	38.0

All Dimensions Are In mm

As Per Is : 8008-1976 (part I)

Max. Working Pressure 10kg/cm²

(±2 MM)

WORKING PRESSURE	
BODY	TEMP.
150 PSI	80° C



PARTH POLY FUSION PVT. LTD.

New Survey No. : 1065/1, Opp. Viva - 2 Ind. Estate,
Near Bhavda Gaam Canal, Bhavda, Ta: Daskroi,
Dist : Ahmedabad, GJ, IN. Pin Code : 382433

AEROCHEM PIPING PVT. LTD.

Plot No. 258, Road No. 1/B,
Phase - I, Kathwada GIDC,
Ahmedabad, GJ, IN. Pin Code : 382430

CONTACT :

+91-9375112220
sales@parthvalves.com
www.parthfusion.com

Note: Every effort has been made to ensure the information in this brochure is correct at the date of issue. Parth Poly Fusion Pvt. Ltd. operates a policy of continual product improvement and range extension, hence reserves the right to modify product specifications, without prior information, in line with market requirements.